

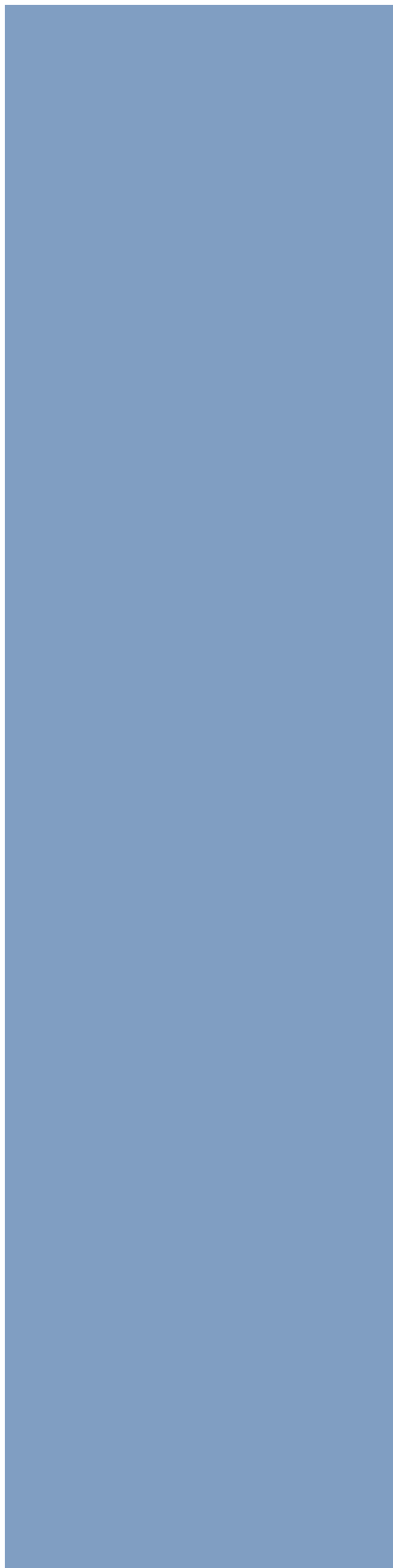


# IMPACT AND CAPACITY GRANTS INITIATIVE

2017 Request for Proposals



Kansas Health Foundation



# BACKGROUND

The Kansas Health Foundation (KHF), based in Wichita, is statewide in focus. With a mission to improve the health of all Kansans, KHF envisions a culture in which every Kansan can make healthy choices where they live, work and play. KHF defines health as a state of complete physical, mental and social well-being and not merely the absence of disease or infirmity. In pursuit of this vision and mission, KHF focuses its grantmaking in two primary program areas: *health equity*, with the goal of contributing to the reduction of health disparities related to social and economic factors; and *civic health*, with the goal of engaging more Kansans to improve the health of our state.

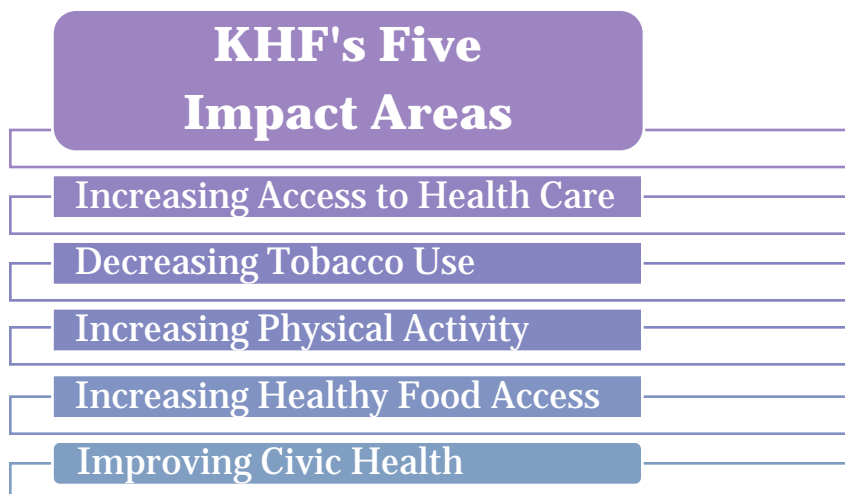
KHF recognizes that to accelerate health improvement in Kansas, there needs to be an intentional focus on *health equity* and eliminating health disparities. KHF further recognizes continued emphasis needs to be placed on *civic health* by fostering civic engagement to ensure more Kansans become involved in efforts to strengthen communities and improve the health of the state. To reflect these beliefs, these two overarching program areas guide KHF's work.

## HEALTH EQUITY

The purpose of our health equity program area is to reduce health disparities related to social and economic factors, with a goal that by 2025 there will be a 10 percent reduction of the health disparities between Kansas adults in at-risk and low-risk socioeconomic groups<sup>1</sup>.

KHF anticipates contributing to the reduction of health disparities by focusing our support on efforts related to:

- Increasing access to health care;
- Decreasing tobacco use;
- Increasing physical activity; and
- Increasing healthy food access.



## CIVIC HEALTH

KHF's civic health program area is focused on supporting efforts related to engaging more Kansans to improve the health of our state, with a goal that by 2025, there will be increased civic engagement among Kansans with an emphasis on populations that experience the greatest health disparities. KHF anticipates contributing to improving civic health by focusing on efforts such as on decreasing the number of Kansans who never vote.

<sup>1</sup> We define "at-risk" by education level (adults ages 25+ without a high school education vs. those with at least a high school education), income (adults ages 18+ with an annual income less than \$15,000 vs. those with annual income greater than \$15,000) and racial/ethnic minorities ages 18+ (Non-Hispanic African American vs. Non-Hispanic White, Hispanic vs. Non-Hispanic White).

# INTRODUCTION

With the above-referenced program areas and strategies in mind, KHF offers this Impact and Capacity Grants Initiative Request for Proposals (RFP) funding mechanism in support of organizations whose missions align with KHF's strategic focus to improve civic health and/or promote health equity in Kansas. All prospective applicants should carefully review KHF's mission and strategic focus, as well as the funding criteria, before applying.

KHF makes grants in the state of Kansas, and our grantmaking is carried out in three ways. We request proposals from organizations with which we have been in contact, we issue requests for proposals (RFPs) that address KHF funding priorities and areas of interest, and, *as through this 2017 Impact and Capacity Grants Initiative, we respond to unsolicited requests for support from organizations whose work aligns with our strategic priorities.*

This initiative provides grants up to \$25,000 for two categories of awards: *impact grants* or *organizational capacity-building grants* (further defined below). A limited pool of funds is available **starting February 1, 2017 and is open through September 15, 2017, or until all 2017 funds are awarded.** This responsive support mechanism is designed to make funds available to a range of mission-aligned organizations actively working to reduce health disparities and promote health equity through organizational capacity building or impact specific grant support.

As it relates to proposals for *impact grants*, preference is given to proposals describing a health policy, systems or environmental-focused effort which demonstrates the opportunity to address health disparities in one or more of KHF's five impact areas described in the *Background* section above (pg. 2) which adversely affect groups of people who have systematically experienced greater obstacles to health based on their racial or ethnic group; language spoken; immigration/documentation status; religion; socioeconomic status; age; mental health; cognitive, sensory, or physical disability; sexual orientation or gender identity; geographic location; or other characteristics historically linked to discrimination or exclusion. **Available funding is designated to support new efforts and may not be used for long-term, ongoing or recurring programmatic efforts.**

As it relates to proposals for *capacity building grants*, **preference is given to non-recurring internal capacity building needs** for organizations addressing health disparities which adversely affect groups of people who have systematically experienced greater obstacles to health based on their racial or ethnic group; language spoken; immigration/documentation status; religion; socioeconomic status; age; mental health; cognitive, sensory, or physical disability; sexual orientation or gender identity; geographic location; or other characteristics historically linked to discrimination or exclusion. This track is open to all mission-aligned organizations actively working to reduce health disparities and promote health equity and is not limited to KHF's five impact areas.



## WHO SHOULD APPLY

Eligible organizations are Kansas nonprofits classified as:

- Tax-exempt under Section 501(c)(3) of the Internal Revenue Code
- Government entity with a Federal Employer Identification number
- Church with a Group Ruling Letter

Eligible applicants are qualifying Kansas organizations whose missions align with KHF's and whose interests coalesce around strategically relevant efforts. Such organizations are those whose work addresses reducing health disparities and/or improving civic health, whose focused efforts complement KHF's funding strategies and have the potential to contribute to measurable impact within KHF's program areas. Applicants should note that only one proposal from each organization will be accepted per year; those organizations with multiple branches/programs/locations across the state may submit only one application per location a year.

Consideration is given to the following:

- Mission alignment between applicant organization and KHF, applicant organization's goals and how they align with KHF's agenda.
- Extent to which applicant organization effectively articulates a strategy for meeting its mission and goals, clarity about what applicant organization wants to accomplish and indicators for success.
- Extent to which applicant organization, if it executes its strategy, is likely to meet the impact it seeks.
- Leadership caliber of applicant organization.
- Governance and financial stability of application organization.

Please note, if an organization already has an active grant from KHF, it is eligible for an Impact or Capacity Building Grant provided what is being proposed is different than the work being done through the active grant.

## WHAT WE FUND

Requests for this funding opportunity are being accepted February 1 through September 15, 2017, or until the limited 2017 funds are awarded. The maximum grant size is \$25,000, and the maximum grant term is two years.

These funds are designed to support KHF's strategic efforts to reduce health disparities and improve civic health through flexible, time-sensitive support for project, policy-specific or capacity building requests from mission-aligned applicant organizations targeting Kansans with the greatest need and least access / economic opportunity. Grant applicants should consider the following criteria when deciding whether to submit a KHF Grant Proposal:

When to  
Apply

Submit a proposal between February 1<sup>st</sup> and September 15<sup>th</sup>, 2017. A limited amount of funds are available, and once expended the initiative will be closed for the year.

Maximum  
Grant  
Amount  
\$25,000

Maximum  
Grant Term  
Two years

Where to  
Apply  
[kansashealth.org](http://kansashealth.org)

Refer to the **Frequently Asked Questions** section of the website before applying

# KHF FUNDING CATEGORIES AND CRITERIA

	DEFINITION	CRITERIA FOR CONSIDERATION (includes the following but is not limited to)	ELIGIBLE ACTIVITIES (includes the following but is not limited to)
<b>IMPACT GRANTS</b>	<p><i>Externally</i> focused efforts designed to impact the population your organization serves that would:</p> <ul style="list-style-type: none"> <li>- Increase access to care;</li> <li>- Decrease tobacco use;</li> <li>- Increase physical activity;</li> <li>- Increase healthy food access; and/or</li> <li>- Increase civic engagement.</li> </ul>	<ul style="list-style-type: none"> <li>- Degree to which applicant organization’s mission and vision align with KHF’s</li> <li>- Extent to which effort addresses a community need experienced as a barrier to health</li> <li>- Efforts that identify a target population and the health disparity at issue</li> <li>- Organization’s past experience with similar efforts</li> <li>- Organization’s connection to the community(ies) they are trying to serve</li> <li>- Extent to which board is engaged</li> <li>- Stability of the leadership team/organization</li> <li>- Objectives/goals of the work (what will be different because of this project?)</li> </ul>	<p>Externally-focused efforts related to making progress in one or more of the five impact areas listed under “Definition,” such as:</p> <ul style="list-style-type: none"> <li>- Policy and systems change advocacy work, including grassroots organizing</li> <li>- Time-limited, objective-focused projects that build on evidence of what works or that seek to test an innovative or promising approach</li> <li>- Initiative planning (e.g. needs assessments, feasibility studies, ROI assessments, cost avoidance studies, convenings, etc.), initiative implementation and/or evaluation</li> <li>- Requests for dollars to match initiative/project committed funds</li> </ul>
<b>ORGANIZATIONAL CAPACITY BUILDING GRANTS</b>	<p><i>Internally</i> focused efforts designed to help your organization fulfill its mission. Includes organizational capacity building efforts to enhance:</p> <ul style="list-style-type: none"> <li>- Leadership;</li> <li>- Management;</li> <li>- Funding/Financial management;</li> <li>- Relationships/Collaboration;</li> <li>- Communication/Marketing;</li> <li>- Programs/Services; and/or</li> <li>- Evaluation/Learning.</li> </ul>	<ul style="list-style-type: none"> <li>- Degree to which applicant organization’s mission and vision align with KHF’s</li> <li>- Extent to which the proposal describes how grant funding would help develop stronger organizational capacity to make progress toward applicant organization’s vision/mission</li> <li>- Organization’s past experience with similar efforts</li> <li>- Organization’s connection to stakeholders/partners</li> <li>- Extent to which board is engaged</li> <li>- Stability of the leadership team/organization</li> <li>- Objectives/goals of this work (what will be different because of this improved capacity?)</li> </ul>	<p>Internally-focused efforts designed to build organizational capacity in one or more of the seven categories listed under “Definition,” such as:</p> <ul style="list-style-type: none"> <li>- Network building, building up of membership base, collaboration, grassroots organizing, convenings</li> <li>- Strengthening evaluation, data, and measurement systems</li> <li>- Organizational planning (e.g. leadership transitions, strategic planning, etc.)</li> <li>- Enhancing operations capabilities (e.g. financial stability, governance, finance administration, etc.)</li> <li>- Professional development (e.g. association memberships, training for board, staff or volunteers, etc.)</li> <li>- Requests for dollars to match committed capacity-building funds</li> </ul>

## FUNDING EXCLUSIONS

Grant funds may not be used for any of the following activities:

- Medical research
- Contributions to capital campaigns
- Operating deficits or retirement of debt
- Construction projects, real estate acquisitions, or endowments, not part of a Foundation-initiated program
- Vehicles, such as vans or busses
- Medical equipment
- Direct mental health services
- Direct medical services
- Grants to individuals
- Annual fund drives
- Fundraising events

## WHEN TO APPLY

Requests for this funding opportunity are being accepted February 1 through September 15, 2017, or until the pool of 2017 funds are awarded. Proposals should be received by KHF at least eight weeks before the start of the proposed grant period. All grant funding recommendations are finalized for any calendar year by November 1.

## WHERE TO APPLY

Proposals must be submitted using KHF's online proposal system. Applicants may also visit [kansashealth.org/impactandcapacity](http://kansashealth.org/impactandcapacity) to learn more, or call 316-262-7676.

## WHEN IS FUNDING DISPERSED

Awarded organizations will receive grant funds once the KHF grant agreement and authorization agreement for direct deposits is signed and returned.

## REPORTING

If a grant is awarded, the organization will be expected to submit one brief report describing the extent to which the project objectives were met at the end of the grant term.