



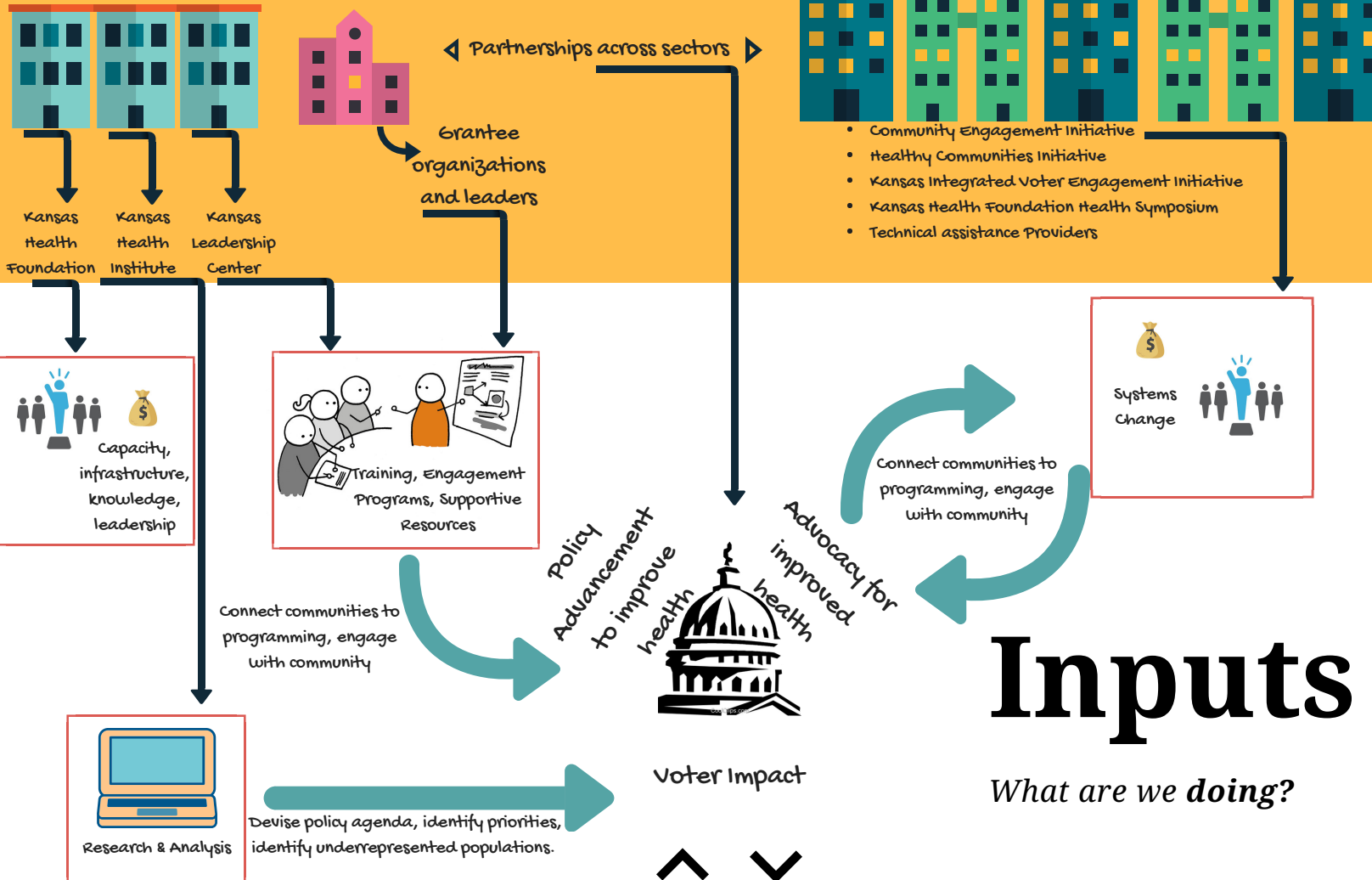
THEORY OF CHANGE



KANSAS HEALTH FOUNDATION

Agents of Change

Who will be involved in the work?



Inputs

What are we *doing*?

Outcomes

What are the *results*?

Impacts

Why does it *matter*?

Lower
Health
Disparities



Improved
Health for
All Kansans

Diversity in KS Leadership

